



MSX **ENGAGE**

powered by Central

Elevate the competencies that increase and sustain performance

Empower employee growth with unrivalled solutions

MSX Engage significantly enhances the employee experience and boosts learner engagement, leading to positive ripple effects across all other business KPIs. Through personalized learning pathways and interactive content delivery, we achieve heightened engagement and improved performance results, complemented by rapid authoring tools and exceptional reporting and analytics.

MSX's unrivalled expertise, experience and global presence delivers measurable business outcomes and a demonstrable ROI. This renders MSX Engage not only highly sought-after but also marketable. It serves as the perfect enhancement for any existing LMS or training platform, creating a strong learning ecosystem.

Faster time to proficiency

28%

Faster onboarding

7%

Faster post-training
proficiency

Higher learning engagement

+90%

Learning completion rates

3x

Engagement with content

More on-the-job application

28%

Higher knowledge retention

+12%

Average employee
productivity improvement



Transform your learning ecosystem

By implementing MSX Engage at the center of your learning ecosystem, you can unlock a world where enhanced employee experience boosts learner engagement, driving success across every business KPI.



Increased engagement

Boost employee satisfaction and drive sustained motivation to improve productivity and retention.

Improve onboarding effectiveness

Create an engaging onboarding experience and provide ongoing training to keep knowledge fresh.

Drive performance through learning

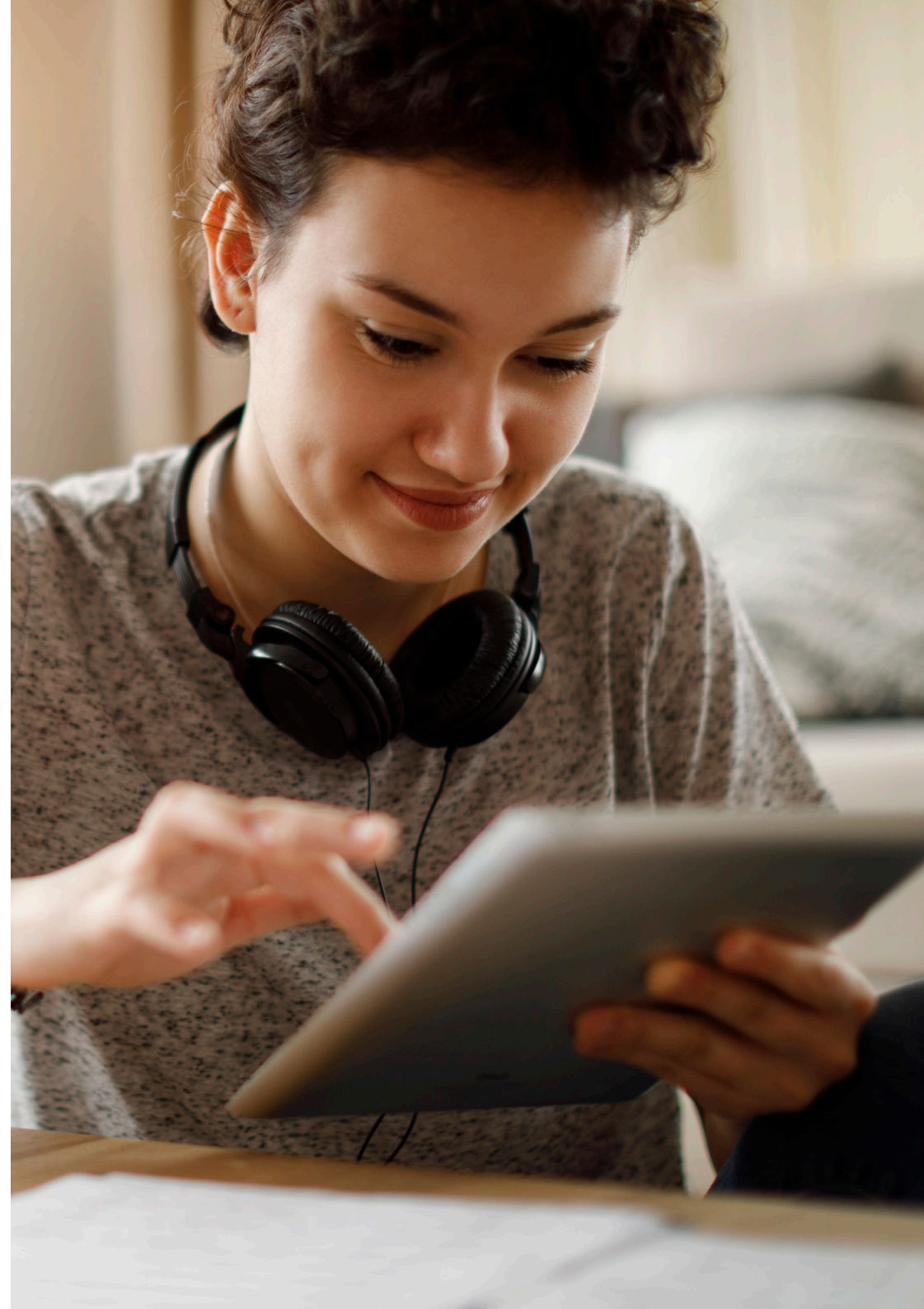
Increase learning impact with AI-powered performance-driven learning delivered in the flow of work.

Adaptive learning and performance enhancement

MSX Engage connects with employees through targeted and adaptive microlearning in the form of eModules, quizzes, videos and scenarios. Each week, employees compete against themselves consuming content with the objective being to better their performance on their personal dashboard.

With each activity being linked to real world KPI's employees are able to see the improvements as they progress. Embedded AI guides managers to provide feedback and coaching for a truly personalized approach that helps increase employee wellbeing, engagement and retention.

Integrated reward and recognition features are specifically designed to further raise employee engagement. Outstanding reporting and analytics tie everything together and provide valuable insights to assist in improving the content being developed and delivered.



MSX Engage in action

Our easy-to-learn, easy-to-use platform offers a dynamic and engaging learning experience, demonstrated through its adaptable interface. Key features include a gamified navigation panel, a performance dashboard with vibrant progress indicators, and competitive challenges that drive learner engagement.

MSX Engage seamlessly integrates with any data source, ensuring security, scalability, openness, and intelligent data segregation. With seamless desktop and mobile access, we ensure continuous, personalized learning and performance tracking, fostering a thriving, interactive learning environment.



Learning solutions that maximize impact

MSX Engage enhances your automotive learning ecosystem by providing a comprehensive platform that seamlessly integrates with existing systems, delivering significant benefits to your business, including:

- **Increased engagement:** Keep learners coming back with gamified competitions, personal challenges, and rewards.
- **Flexible learning:** Deliver content in the flow of work across desktop, tablet, and mobile devices.
- **Optimized retention:** AI-driven microlearning activities improve knowledge retention and speed to proficiency.
- **Measurable ROI:** Proactive recommendations and performance-driven learning based on real-time data.
- **Engaged learners:** Interactive content motivates and engages learners.
- **Retained knowledge:** Effective strategies for long-term retention and application.
- **Enhanced performance:** Targeted training programs optimize employee efficiency.
- **Cost savings:** Streamlined solutions minimize training-related expenses.

By implementing MSX Engage as a key component of a learning ecosystem, companies will unlock a world where enhanced employee experience and learner engagement, drives measurable success across every business KPI.

MSX ENGAGE

powered by Central



Get in touch with us

www.msxi.com/engage

